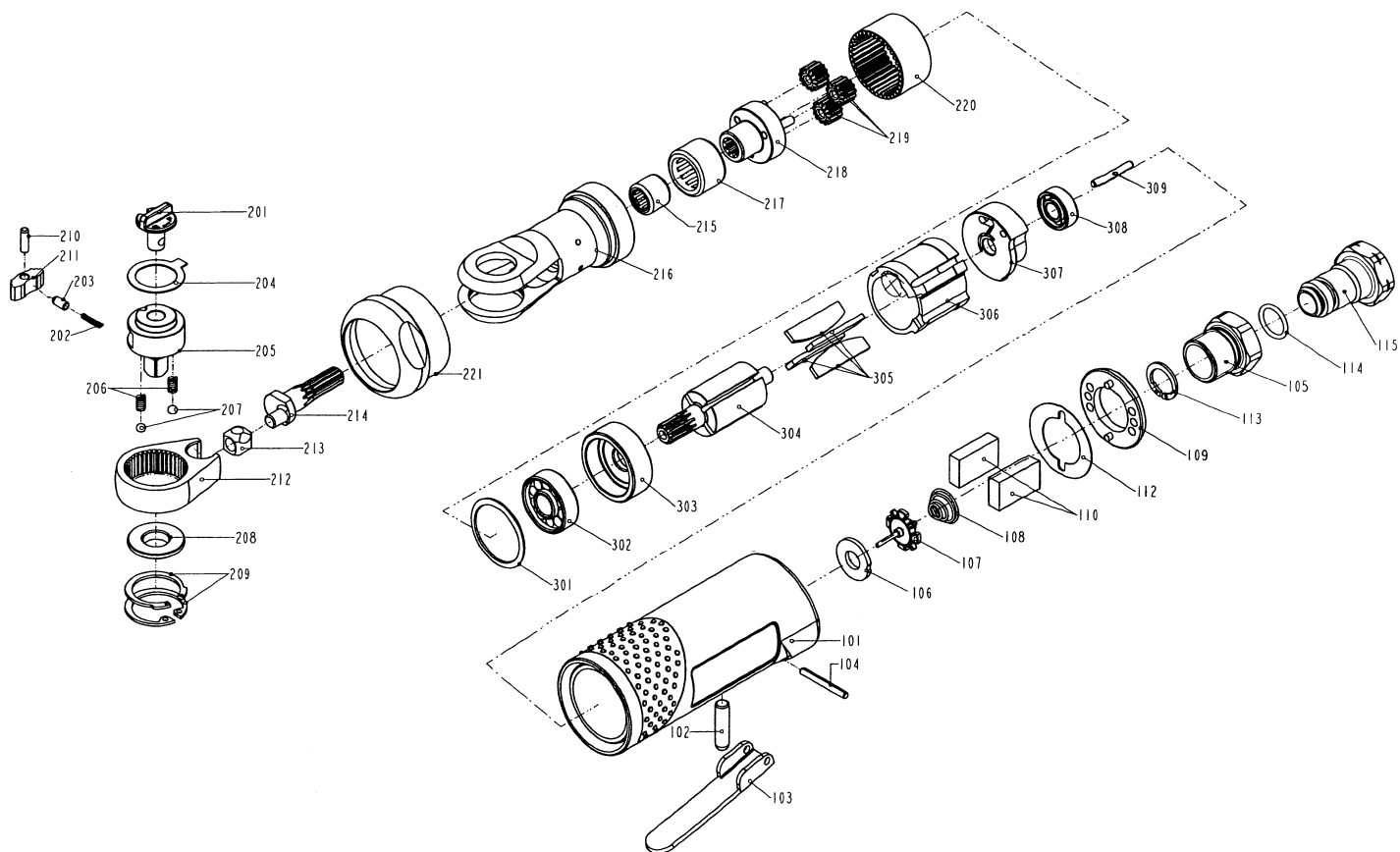


# DIAGRAM OF URW103A



| ITEM NO.   | PART NO.        | DESCRIPTION          | ITEM NO. | PART NO.        | DESCRIPTION    | ITEM NO. | PART NO. | DESCRIPTION |
|------------|-----------------|----------------------|----------|-----------------|----------------|----------|----------|-------------|
| 101        | 12201-1024701-1 | HOUSING              | 220      | 1231A-1020001-1 | INTERNAL GEAR  |          |          |             |
| 102        | 12305-1020001-1 | VALVE STEM           | 221      | 12321-1024701-1 | LOCK RING KEY  |          |          |             |
| 103        | 12310-1024701-1 | TRIGGER              | 301      | 12340-1024702-1 | SPRING-WASHER  |          |          |             |
| 104        | 2040400-04110-0 | SPRING PIN           | 302      | 2041200-00020-0 | BEARING        |          |          |             |
| 105        | 12309-0074709-1 | AIR INLET            | 303      | 12312-1020001-1 | FRONT PLATE    |          |          |             |
| 106        | 12306-0014701-1 | SEAL                 | 304      | 12313-1020001-1 | ROTOR          |          |          |             |
| 107        | 12307-0014701-2 | TIP VALVE            | 305      | 12314-1020001-1 | FAN            |          |          |             |
| 108        | 12308-0014701-1 | CONICAL SPRING       | 306      | 12315-1024701-2 | CYLINDER       |          |          |             |
| 109        | 12352-1024701-1 | OUTLET CONTROLLER    | 307      | 12316-1020001-1 | REAR END PLATE |          |          |             |
| 110        | 12351-1020001-1 | MUFFLER              | 308      | 2041200-00170-0 | BEARING        |          |          |             |
| 112        | 1232G-1020001-1 | FILTER               | 309      | 2040400-04090-0 | SPRING PIN     |          |          |             |
| 113        | 2040304-48010-0 | EX-CONCENTRIC RING   |          |                 |                |          |          |             |
| 114        | 2041102-02010-0 | O - RING             |          |                 |                |          |          |             |
| 115        | 12309-0074712-1 | AIR INLET            |          |                 |                |          |          |             |
| 201        | 1231H-1024701-1 | REVERSE LEVER        |          |                 |                |          |          |             |
| 202        | 1230J-1020001-1 | REVERSE SPRING       |          |                 |                |          |          |             |
| 203        | 1230B-1024701-1 | REVERSE PIN          |          |                 |                |          |          |             |
| 204        | 1230S-1024702-1 | YOKE-WASHER          |          |                 |                |          |          |             |
| 205        | 12240-1014701-1 | ANVIL ASSMBLY        |          |                 |                |          |          |             |
| 206        | 1230J-1020002-1 | THRUST WASHER SPRING |          |                 |                |          |          |             |
| 207        | 2040800-01010-0 | STEEL BALL           |          |                 |                |          |          |             |
| 208        | 12340-1014701-1 | ANVIL-WASHER         |          |                 |                |          |          |             |
| 209        | 2040303-33010-0 | IN-CONCENTRIC RING   |          |                 |                |          |          |             |
| 210        | 1230B-1010001-1 | PLANET PIN           |          |                 |                |          |          |             |
| 211        | 1231G-1020001-1 | RATCHET PAWL         |          |                 |                |          |          |             |
| 212        | 1231E-1024701-1 | YOKE                 |          |                 |                |          |          |             |
| 213        | 1231D-1024701-1 | DRIVE BUSHING        |          |                 |                |          |          |             |
| 214        | 12322-1024701-1 | MOTER SHAFT BALANCER |          |                 |                |          |          |             |
| 215        | 2041202-00020-0 | NEEDLE BEARING       |          |                 |                |          |          |             |
| 216        | 1230Y-1024701-1 | RATCHET HOUSING      |          |                 |                |          |          |             |
| 217        | 2041202-00010-0 | NEEDLE BEARING       |          |                 |                |          |          |             |
| 218        | 12241-1020001-1 | PLAENT CAGE ASSY     |          |                 |                |          |          |             |
| 219        | 1231B-1020001-1 | PLANET GEAR          |          |                 |                |          |          |             |
| 2007.10.17 |                 |                      |          |                 |                |          |          |             |
|            |                 |                      |          |                 |                |          |          | URW103A     |